



GeoData Corp

DIGITAL MAPPING SERVICES

Review

Volume 16, Issue 2

104 E. Horton Street • Zebulon, NC • 1-800-966-4MAP • www.GeoDataCorporation.com

Inside this Issue

15 Years	1
BallPark Price	2
Flying Season	3
Free Estimate	3
GeoData's President	2
GeoData News	2
God Bless Americal	4
Landfill Growth	1
Landfill Growth cont.	4
Products & Services	3
Recent Projects	3



*That's right! 15 years
serving our clients with
honesty and integrity.*

*With your help we
anticipate many more
anniversaries. Thanks to
all who have helped
GeoData become what it
is today, from our
employees to our faithful
clients GeoData would
like to say THANK YOU!*

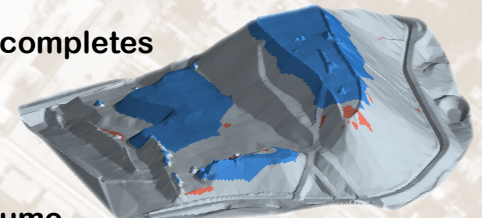
Landfill Growth Monitoring

As a team member within a group of consultants, GeoData Corp. is pleased to have been chosen to help monitor the Wake County Landfills. GeoData started producing digital terrain maps (DTMs) of the North Wake Landfill in November 2000 and has completed mapping each month to date.

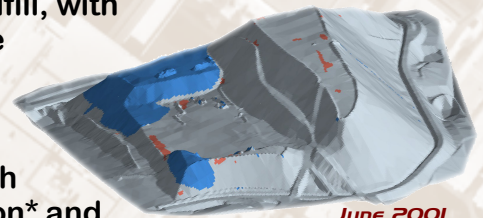


January 2001

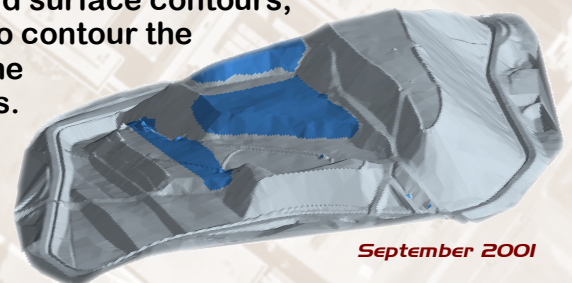
As part of the process, GeoData completes a digital terrain model of multiple "cells" or areas of the site each month. A Triangulate Irregular Network (TIN) is created from the DTM models in each cell and a volume is then calculated through a comparison to the previous month's data. The adjoining rendered models are of the main cell in the North Wake Landfill, with approximately three months time elapsing between each image. These images have a four time vertical exaggeration to better show the growth throughout each time period. Utilizing Microstation* and Geopak* software, we produced several maps of each cell. Expanding upon the standard surface contours, Isopac* contours are used to contour the cut and fill areas to insure the consistency of the quantities. In the adjacent renderings the FILL is represented by blue and the CUT is represented by the red.



April 2001



June 2001



September 2001

GeoData Corp. is very pleased to be a part of this project through

* Trademarks of their respective companies

GEODATA'S PRESIDENT

Although many of you may know James M. Salmons PLS, we would like to take this opportunity to better acquaint you with GeoData's *new president*. James became president of GeoData in the spring of 2001, after eleven years of commitment and hard work. Ironically James had just been elected President of the North Carolina Chapter of the American Society for Photogrammetry and Remote Sensing in January of 2001. James has volunteered many hours representing the chapter on a variety of issues concerning mapping as a whole. This includes licensing of Photogrammetrist in North Carolina, South Carolina, and Virginia. James is also helping to establish consistent minimum standards for conventional topo surveying, Photogrammetric mapping, and Lidar (an emerging new approach to mapping). James also represents the NCASPRS on the NC CTS Committee (or North Carolina Cooperating Technical State Committee). The CTS Committee is an organization established to aid in the managing of the North Carolina Flood Plain Mapping Project.

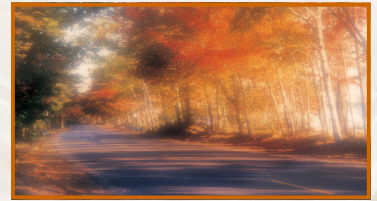
GeoData's goal and mission statement has been and will remain to be customer satisfaction through our joint efforts to produce an organization that is a winning combination of people and service. Customer service has always been and shall be GeoData's top priority. Our team of professionals include:

Tim Merrill ~ Production Manager

Shawn Bradshaw ~ Systems Manager/Graphic Designer

Jeff Foutch ~ Stereo Compiler

Randy Moss on Softcopy Systems
and the rest of our production crew!



BALLPARK PRICE

We are often asked for a "Ball Park" figure for a mapping project. While we support the "Mini Brooks Act", in an effort to give potential clients an example, the following sample quote is provided:

Project size	100 Acres
Map Scale	1"=100'
Con. Interval	2'
Area	Charlotte, NC
Terrain (relief)	Medium
Planimetrics	Light
Schedule	Normal
Ground Control	Client Provide
Total Cost:	\$30/acre



GEODATA'S NEWS

GeoData has enjoyed a pleasant spring and summer. We decided to get together



and have a company Pig Picking and all the families of GeoData came. GeoData purchased season tickets for the Mudcats baseball games, which are held only five minutes away from our office in Zebulon, everyone had a chance to go.

In September, GeoData was proud to sponsor Tim Merrill (our Production Manager), and his son Cameron at the

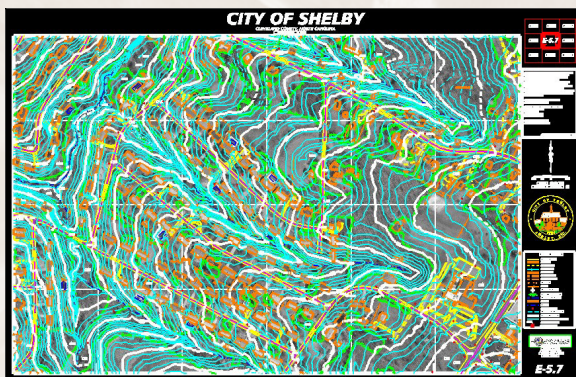
"Raleigh Street Painting Festival 2001". Their canvas was a 4'X4' area of pavement. Both worked together on a beautiful rendition of Sir Walter Raleigh. There is a lot of talent in that family!

GeoData Corp. is also proud to say that we were again granted an open end contract with the NCDOT for the 11th consecutive year.

RECENT PROJECTS

GeoData recently completed a city wide mapping project for the City of Shelby and the Town of Boiling Springs. The project encompassed over 40,000 acres of Topographic mapping with two foot contours. Ground control was set by Dobbin Lattimore of Lattimore and Peeler utilizing GPS.

We used new black and white aerial



photography to compile planimetric features. A digital terrain model was then compiled consisting of true break lines and mass points to produce 2 foot contours of the entire area. The deliverables included over 240 Digital Orthophotos in .TIF format with world files, mylar plots, and all digital data was in .DWG format.

PRODUCTS & SERVICES

Services and capabilities include but not limited to:

- ☐ Project Planning & Consulting
- ☐ Volume Computations
- ☐ Acquisition of Aerial Photography
- ☐ Field Classification
- ☐ Highway Design Mapping
- ☐ Data Translation
- ☐ Aerial Triangulation
- ☐ 911 Mapping
- ☐ Digital Mapping
- ☐ Photo Plan Sheet
- ☐ Digital Orthophotos
- ☐ CAD Drafting
- ☐ DTM (Digital Terrain Model)
- ☐ Photo Enlargements

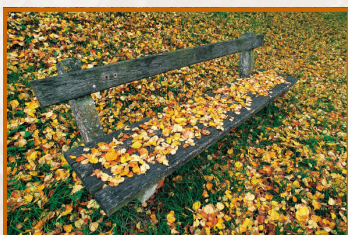
Information needed for FREE Estimate

- ☐ Area accurately outlined on USGS quad sheet
- ☐ Line map or digital Orthophotos
- ☐ Scale & contour interval of map
- ☐ Is site open or wooded
- ☐ Will you perform ground control survey
- ☐ Is site developed or rural
- ☐ Type & size of plots needed
- ☐ Any special needs or considerations

Please call James at (919)269-5744 with any questions you may have or fax us the above information at (919) 269-0413. We will do our best to respond within 24 hours. If you would rather send the information via e-mail, the address is

jsalmons@geodatacorporation.com

FLYING SEASON



This is a gentle reminder. Flying season for Aerial Photography is rapidly approaching. If you are planning to have a site mapped or need some aerial photography it is

always a good idea to get an early start. It will not be long before the cameras will start filming. By planning the flight early, we are often able to combine several projects on the same photo mission saving everyone money!! Most of you know about being able to see the ground when the leaves are off the trees, if we cannot see the ground, we cannot produce as

complete a map due to the ground being obscured.



Garrett Bradshaw
helping Daddy with
the leaves



God Bless America



*God is our refuge and
strength, a very present
help in trouble.
Psalm 46:1*

Landfill Growth Monitoring cont. from pg 1

which we are allowed to expand our knowledge and experience.

Local newspapers have reported that many decisions concerning the current site along with proposed future sites are currently being made in conjunction with this monitoring study. Though an unpleasant task, the necessity to examine the growth in the local landfills is critical. The accurate determination



The above stereo pair is there for your reference, Please call Tim Merrill Project Manager at (919) 269-5744 with any questions.



**104 E. Horton Street
Zebulon, NC 27597**

Caption describing picture or graphic.

Fall 2001

Designed & Printed by GeoData's Staff — USA

Phone: 919-269-5744 • Fax: 919-269-0413 • web address: www.GeoDataCorporation.com